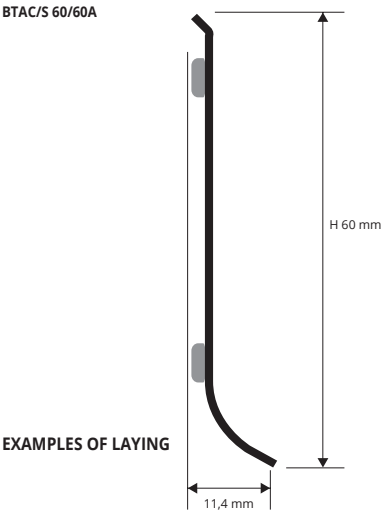


SKIRTING 60

POLISHED and SATINED
STAINLESS STEEL AISI 304/1.4301-V2A

SKIRTING 60 made in stainless steel AISI 304/1.4301-V2A in height 60 mm. Available with or without adhesive. Superior aesthetic quality, extremely strong and easy to lay, it is ideal for all public and private environments that require high standards of hygiene and image. Used increasingly more often in contrast combinations with wood, carpeted floors, etc. for an unmistakable hi-tech effect. In order to facilitate and to perfect the laying process, internal and external angles, plugs and junctions are recommended.



POLISHED STAINLESS STEEL AISI 304/1.4301-V2
with protective film - bar length 2 lm - pack. 25 Pcs - 50 lm

Article	H mm		
BTAC 60A (adhesive)	60		
BTAC 60	60		





SATINED STAINLESS STEEL AISI 304/1.4301-V2A
with protective film - bar length 2 lm - pack. 25 Pcs - 50 lm

Article	H mm		
BTACS 60A (adhesive)	60		
BTACS 60	60		

SUITABLE FOR USE IN CONTACT WITH FOODSTUFFS

LAYING INSTRUCTIONS
1. Choose the "SKIRTING 60" also choose with or without adhesive. 2. Cut the profile to the required length, taking care to calculate the width of the inside-outside corner joints. 3. For the self-adhesive version, the surface must be smooth, grease-free and not porous. It is not recommended for plaster and mortar surfaces (version without adhesive is better, using fast-setting acrylic silicone which is suitable for fixing aluminium to mortar - plaster, etc.). 4. Use the corner linking elements-joints and right and left end caps to facilitate laying.

COLOURS

	
AC - Polished stainless steel AISI 304/1.4301-V2A	ACS - Satined stainless steel AISI 304/1.4301-V2A

USE PROBAND FIX FOR FIXING THE PROFILE TO THE WALL



CORNERS, END CAPS AND JOINTS

STEEL and VARNISHED METAL

EDGE COVER VARNISHED METAL



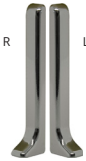
RIZCT... 60/...
internal corner



REZCT... 60/...
external corner

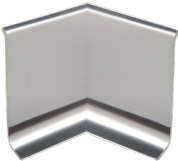


GIZCT... 60/...
joint



TPZCT... 60/...
end caps

PRE-WELDED



RI... 60/...
internal corner



RE... 60/...
external corner

VARNISHED METAL - EDGE COVER CORNERS - articles not for sale singly

INTERNAL/EXTERNAL CORNER - EDGE COVER
VARNISHED METAL POLISHED STEEL EFFECT

Article	HxL mm	pack. 2Pcs	pack. 5Pcs
RIZCTAC 60/... (int.)	60 x 20		
REZCTAC 60/... (ext.)	60 x 20		

JOINT - EDGE COVER
VARNISHED METAL POLISHED STEEL EFFECT

Article	H mm	pack. 2Pcs	pack. 5Pcs
GIZCTAC 60/...	60		

Choose the desired packaging.
E.g.: RIZCTAC 60/2 (pack. 2 Pcs) - RIZCTAC 60/5 (pack. 5 Pcs)

END CAPS R / L - EDGE COVER - VARNISHED METAL POLISHED STEEL EFFECT - pack. 4Pcs (2 R + 2 L) / 10Pcs (5 R + 5 L)

Article	H mm	pack. 4Pcs	pack. 10Pcs
TPCCTAC 60/...	60		

Choose the desired packaging.
E.g.: TPCCTAC 60/2 (pack. 4 Pcs: 2 right + 2 left)
TPCCTAC 60/5 (pack. 10 Pcs: 5 right + 5 left)

INTERNAL/EXTERNAL CORNER - EDGE COVER
VARNISHED METAL SATINED STAINLESS ST. EFFECT

Article	HxL mm	pack. 2Pcs	pack. 5Pcs
RIZCTACS 60/... (int.)	60 x 20		
REZCTACS 60/... (ext.)	60 x 20		

JOINT - EDGE COVER
VARNISHED METAL SATINED STAINLESS ST. EFFECT

Article	H mm	pack. 2Pcs	pack. 5Pcs
GIZCTACS 60/...	60		

Choose the desired packaging.
E.g.: RIZCTACS 60/2 (pack. 2 Pcs) - RIZCTACS 60/5 (pack. 5 Pcs)

END CAPS R / L - EDGE COVER - VARNISHED METAL SATINED STAINLESS ST. EFFECT - pack. 4Pcs (2 R + 2 L) / 10Pcs (5 R + 5 L)

Article	H mm	pack. 4Pcs	pack. 10Pcs
TPCCTACS 60/...	60		

Choose the desired packaging.
E.g.: TPCCTACS 60/2 (pack. 4 Pcs: 2 right + 2 left)
TPCCTACS 60/5 (pack. 10 Pcs: 5 right + 5 left)

STEEL AISI 304/1.4301-V2A - FLUSH CORNERS - articles not for sale singly

INTERNAL/EXTERNAL CORNER
FLUSH PRE-WELDED - POLISHED STEEL EFFECT

Article	HxL mm	pack. 2Pcs	pack. 5Pcs
RIAC 60/... (int.)	60 x 50		
REAC 60/... (ext.)	60 x 50		

Choose the desired packaging.
E.g.: RIAC 60/2 (pack. 2 Pcs) - RIAC 60/5 (pack. 5 Pcs)

INTERNAL/EXTERNAL CORNER
FLUSH PRE-WELDED - SATINED STAINLESS STEEL

Article	HxL mm	pack. 2Pcs	pack. 5Pcs
RIACS 60/... (int.)	60 x 50		
REACS 60/... (ext.)	60 x 50		

Choose the desired packaging.
E.g.: RIACS 60/2 (pack. 2 Pcs) - RIACS 60/5 (pack. 5 Pcs)