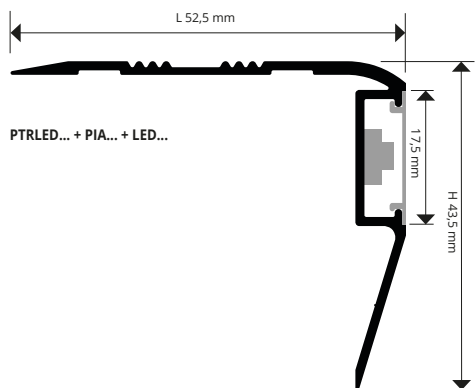


PROSTAIR LED

ANODIZED SILVER ALUMINIUM
- FLAT - LED

PROSTAIR LED is an aluminium profile available in the silver anodized finishes, that can be fixed with adhesive or dowels to the step tread. It has a grooved non-slip 52,5mm wide horizontal surface and an integrated LED lighting system, placed on its 43,5mm high vertical side. The integrated LED system generates cold or warm light and is protected by a matt or transparent polycarbonate plate, provided with a special fixing system, that allows it to be removed any time maintenance on the lighting system should be required. Its design and to the range of finishes available, together with its easy installation make **PROSTAIR LED** an appreciated solution both in public and in residential spaces.



EXAMPLES AND INSTRUCTIONS FOR LAYING METHODS



1. Choose PROSTAIR LED depending on the desired finish, light effect and polycarbonate plate; 2. If you are using the version with adhesive, clean first the surface where the profile will be installed. Once the surface has dried, remove the protective film and install the profile, applying adequate pressure on it; 3. If you are using the punched version, place the profile on the step tread and mark the position of the profile holes on the step tread; 4. Drill the step tread and fasten the profile using plugs; 5. Connect the LED to the low tension power supply and install the polycarbonate plate.



ANODIZED SILVER ALUMINIUM

bar length 2,7 lm - pack. 20 Pcs - 54 lm

ADAPTOR LED, LED & FLAT NOT INCLUDED

Article	H x L mm
PTRLEDAA 5040	43,5 X 52,5
PTRLEDAA 5040A	43,5 X 52,5
PTRLEDAA 5040F	43,5 X 52,5

"A" at the end of the product code = Item with adhesive
"F" at the end of the product code = Punched Item

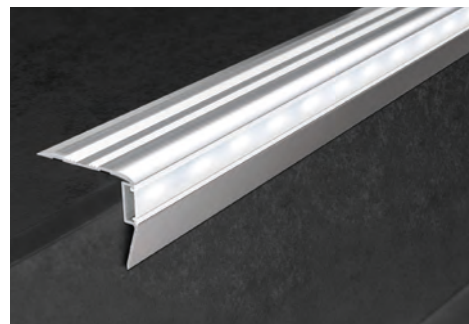
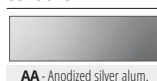
ADHESIVE FLEXIBLE LED COIL

length 5 lm - pack. 1 ROLL

Article
LEDN
LEDF
LEDC

"N" at the end of the product code = neutral light
"F" at the end of the product code = cold light
"C" at the end of the product code = hot light

COLOURS



POLYCARBONATE FLAT bar length 2,7 lm - pack. 20 Pcs - 54 lm
(AL = transparent / AO = matt)

Article
PIAL 17
PIAO 17

ENDCAPS- R / L - pack. 6 Pcs (3 R and 3 L)

Article	H x L mm
TPTRLEDAA 5040/3	43,5 X 52,5



LED ADAPTOR AC/DC 75W - 12V (15 lm)

Article
ALL 7512

LED ADAPTOR AC/DC 25W - 12V (5 lm)

Article
ALL 2512

