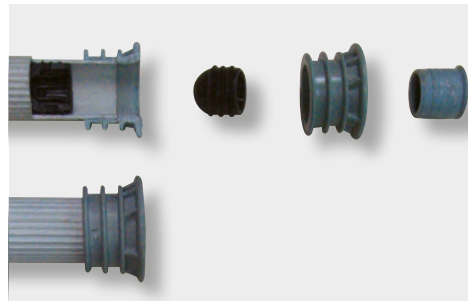
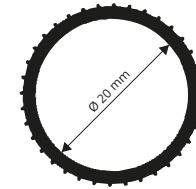


RIBBED DISTANCE TUBE

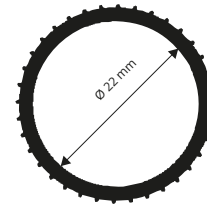
GREY RIGID PVC



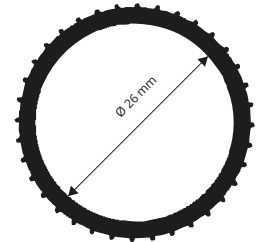
PPD 20



PPD 22



PPD 26



GREY RIGID PVC

bar length 2 lm - pack. 25 Pcs - 50 lm

| Article | Ø mm inside | | |
|---------|-------------|--|--|
| PPD 20 | 20 | | |
| PPD 22 | 22 | | |
| PPD 26 | 26 | | |

PPD 20/ PPD 22: 5.000 lm / pallets
PPD 26: 3.000 lm / pallets

COLOURS



G - Grey

WASHERS AND END CAPS FOR DISTANCE TUBE

GREY HD POLYPROPYLENE - PVC / RUBBER

WASHERS - GREY HD POLYPROPYLENE

pack. 1000 Pcs

| Article | Ø mm outside | | |
|---------|--------------|--|--|
| PPR 20 | 20 | | |
| PPR 22 | 22 | | |
| PPR 26 | 26 | | |

OUTSIDE WASHERS - GREY HD POLYPROPYLENE

pack. 1000 Pcs

| Article | Ø mm | | |
|----------|------|--|--|
| RETDB 22 | 26 | | |

INSIDE END CAPS - PVC / RUBBER

pack. 2000 PCS divided into two 1000 Pcs bags

| Article | Ø mm | | |
|----------|------|--|--|
| TIGPC 22 | 22 | | |

SMOOTH PLUGS - GREY HD POLYPROPYLENE

(PPT 20/ 22/ 26 pack. 2000 Pcs divided into two 1000 Pcs bags)

| Article | Ø mm | Pcs/Pack. | | |
|---------|------|-----------|--|--|
| PPT 09 | 9 | 1000 | | |
| PPT 12 | 12 | 1000 | | |
| PPT 16 | 16 | 1000 | | |
| PPT 20 | 20 | 2000 | | |
| PPT 22 | 22 | 2000 | | |
| PPT 26 | 26 | 2000 | | |

HOLLOW PLUGS - GREY HD POLYPROPYLENE

pack. 2000 Pcs divided into two 1000 Pcs bags

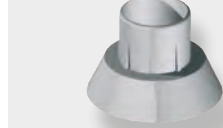
| Article | Ø mm | Pcs/Pack. | | |
|---------|------|-----------|--|--|
| PPTC 22 | 22 | 2000 | | |

SMOOTH PLUG
for walls without plaster

HOLLOW PLUG
for plaster



PPR 20 / 22 / 26



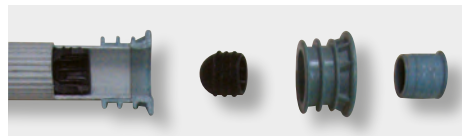
PPT 09 / 12 / 16 / 20 / 22 / 26



RETDB 22

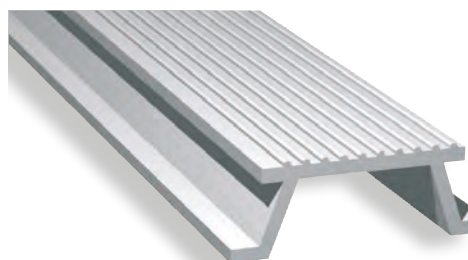
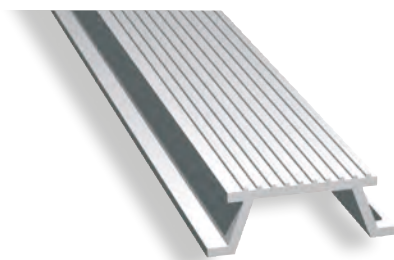


TIGPC 22

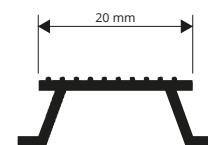


DRIP

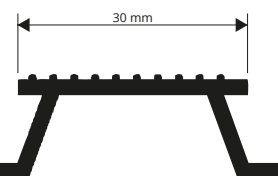
GREY RIGID PVC



GCT 20



GCT 30



GREY RIGID PVC

bar length 2 lm - pack. 50 Pcs - 100 lm

| Article | L x H mm | | |
|---------|----------|--|--|
| GCT 20 | 20 x 12 | | |
| GCT 30 | 30 x 15 | | |

GCT 20: 15.000 lm / pallets
GCT 30: 10.000 lm / pallets

COLOURS



G - Grey

LAYING INSTRUCTIONS

Must be fixed below the sheathing/armature to create the drip course.

* = Production on demand with minimum quantity of 10000 pcs. Production delay 4/5 weeks. Price to be agreed.