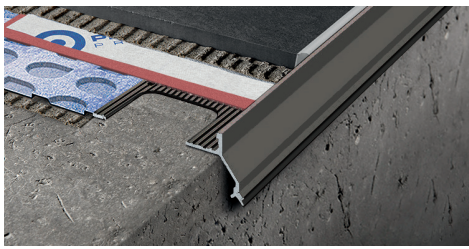


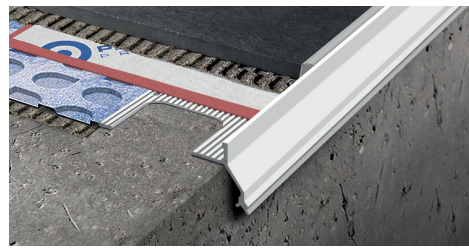
**PROTERRACE ECO DRIP** is an edging profile in aluminium designed to protect the front of the screed from water penetration and the edges of the tiles laid on terraces and balconies. The profile is equipped with a punched flange that ensures its fixing to the support. The front the profile is equipped with a double drip to improve the push away of water from the wall. To reach a right connection between profile and the waterproofing system it's needed to use **PROBAND 150** with **PROBAND KOLL/AB**. The product is also available on request in **BENDABLE VERSION** and with a **SPECIAL SEASIDE PRE-TREATMENT** which increases its resistance to corrosion when installed at sea front environments.

# PROTERRACE ECO DRIP

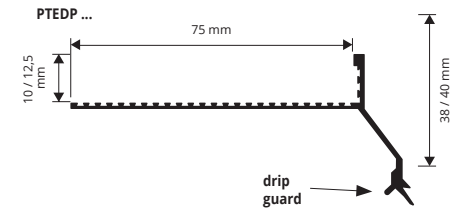
VARNISHED/COATED ALUMINIUM



VARNISHED/COATED ALUMINIUM bar length 2,7 lm - pack. 20 Pcs - 54 lm



EXTERNAL CORNER - pack 10 Pc



Article	H mm	€/lm	€/Pc
PTEDP 10AL...	10		
PTEDP 125AL...	12,5		

Available in the colours: BF - GF - A - TF (EF - C - B - G - E - T on demand)  
The code of the selected colour must be added to the article code.  
E.g.: PTEDP 10AL... (gray) PTEDP 10GFAL.

### JOINTS - pack. 2 / 10 Pcs

Article	€/pack. 2Pcs	€/pack. 10Pcs
GINEDP 10AL... /...		
GINEDP 125AL... /...		

### EMBOSSSED COLOURS

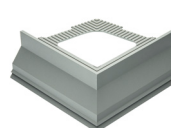
BF - White (9010)	GF - Grey (7038)	A - Anthracite grey (no RAL)	TF - Dark brown (8019)

Article	€/Pc	€/Pack
AEEDP 10AL.../10		
AEEDP 125AL.../10		

### GINEDP 10/125ALGF



### AEEDP 10/125ALGF



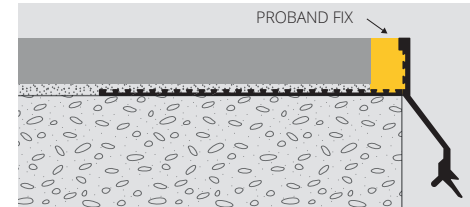
### COLOURS ON DEMAND

SEMIGLOSSY			
B - White (9010)	G - Grey (7038)	E - Beige (1019)	T - Dark brown (8019)

### EMBOSSSED

EF - Beige (1019)	C - Corten

### EXAMPLES AND INSTRUCTIONS FOR LAYING METHODS



1. Choose "PROTERRACE ECO DRIP" according to the tile thickness.
  2. Cut "PROTERRACE ECO DRIP" to the desired length and fix it to the support with nails.
  3. Apply the desired waterproofing system, sealing the joint between profile and waterproofing.
  4. Lay the tiles, leaving about 5 mm between tiles and profile.
  5. Seal the space between tiles and profile using **PROBAND FIX (PRBFX)**.
- PROFILE BENDING:** 1) Cut the anchoring flange into sections and engrave the metal close to the vertical side 2) bend the profile with the help of a template;

### HOW TO REQUEST SEASIDE TREATMENT

When placing your order please add S to the article's number  
Example: PTEDP 10ALGF (seaside) = **PTEDP 10ALGFS**  
**price for seaside treatment +50% on the gross price.**

© 2022 All rights reserved by Progress Profiles. Printed in Italy

PROFILES FOR TERRACES

**PROTERRACE ECO** is a natural aluminium edging profile designed to protect the edges of the tiles laid on terraces and balconies. The profile is provided with a punched flange that ensures its fixing to the support. The front side of the profile protects the tile edges and is equipped with grooves that facilitate the grout grip. Thanks to its ease of application **PROTERRACE ECO** is a much sought after profile. To reach a right connection between profile and the waterproofing system it's needed to use **PROBAND 150** with **PROBAND KOLL/AB**. The product is also available on request in **BENDABLE VERSION**

# PROTERRACE ECO

ALUMINIUM



### NATURAL ALUMINIUM thermo packed

bar length 2,7 lm - pack. 20 Pcs - 54 lm

Article	H mm	€/lm	€/Pc
PTEE 08AN	8		
PTEE 10AN	10		
PTEE 125AN	12,5		

### SILVER ANODIZED ALUMINIUM thermo packed

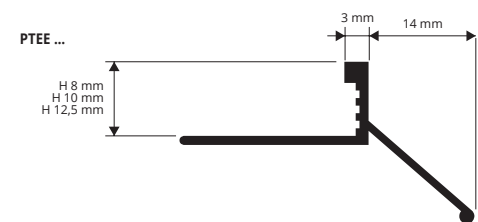
bar length 2,7 lm - pack. 20 Pcs - 54 lm

Article	H mm	€/lm	€/Pc
PTEE 08AA	8		
PTEE 10AA	10		
PTEE 125AA	12,5		

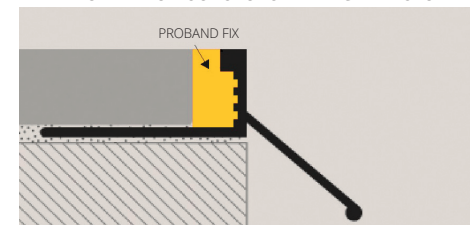
### COLOURS

AN - Natural aluminium	AA - Anodized silver alum.

### ARTICLES NOT FOR SALE SINGLY



### EXAMPLES AND INSTRUCTIONS FOR LAYING METHODS



1. Choose "PROTERRACE ECO" according to the tile thickness.
  2. Cut "PROTERRACE ECO" to the desired length and fix it to the support with nails.
  3. Apply the desired waterproofing system, sealing the joint between profile and waterproofing.
  4. Lay the tiles, leaving about 5 mm between tiles and profile.
  5. Seal the space between tiles and profile using **PROBAND FIX (PRBFX)**.
- PROFILE BENDING:** 1) Cut the anchoring flange into sections and engrave the metal close to the vertical side 2) bend the profile with the help of a template;