

PROSOL 18-30-35-40 in steel are self-adhesive joint - covers in stainless steel 1.4016 available in various widths. They are used to join floors of the same or differing material and thickness. The rounded shape also allows the profile to be used to edge shallow floors max. 5 mm thick. **PROSOL** is normally used to cover flaws and defects created during laying of ceramic/wood/parquet floors by covering the joint/threshold. **PROSOL** is recommended for all sorts of public environments: hotels, offices, shops and private dwellings; it guarantees an impeccable and attractive finish.

PROSOL 18-30-35-40

STAINLESS STEEL 1.4016 WITH
SELF-ADHESIVE WITH PROTECTIVE FILM

threshold - joint-cover profiles



STAINLESS ST. 1.4016 with adhesive thermo packed
bar length 2,7 lm - pack. 40 Pcs - 108 lm (L 35/40 mm - 54 lm)

Article	Width-thick.	€/lm	€/Pc
PLSAC 18A	18 mm - 10/10		
PLSAC 30A	30 mm - 10/10		
PLSAC 35A	35 mm - 10/10		
PLSAC 40A	40 mm - 12/10		

STAINLESS ST. 1.4016 with adhesive thermo packed - bar length 0,83 lm - pack. 20 Pcs  **ECO BLISTER**

Article	Width-thick.	€/Pc
PLSAC 308A	30 mm - 10/10	
PLSAC 358A	35 mm - 10/10	

On demand 0,73 or 0,63 lm bar length (quantity and prices to be agreed. Production delay 4/5 weeks).

STAINLESS ST. 1.4016 with adhesive thermo packed - bar length 0,90 lm - pack. 20 Pcs  **ECO BLISTER**

Article	Width-thick.	€/Pc
PLSAC 189A	18 mm - 10/10	

STAINLESS ST. 1.4016 with adhesive thermo packed - bar length 0,93 lm - pack. 20 Pcs  **ECO BLISTER**

Article	Width-thick.	€/Pc
PLSAC 309A	30 mm - 10/10	
PLSAC 359A	35 mm - 10/10	



STAINLESS ST. 1.4016 with adhesive thermo packed - bar length 0,83 lm - pack. 20 Pcs  **SELF PACK**

Article	Width-thick.	€/Pc
PLSAC 308AS	30 mm - 10/10	*
PLSAC 358AS	35 mm - 10/10	*

On demand 0,73 or 0,63 lm bar length (quantity and prices to be agreed. Production delay 4/5 weeks).

STAINLESS ST. 1.4016 with adhesive thermo packed - bar length 0,93 lm - pack. 20 Pcs  **SELF PACK**

Article	Width-thick.	€/Pc
PLSAC 309AS	30 mm - 10/10	
PLSAC 359AS	35 mm - 10/10	
PLSAC 409AS	40 mm - 12/10	*

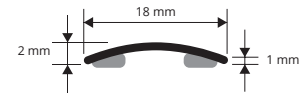
STAINLESS ST. 1.4016 with adhesive thermo packed - bar length 1,03 lm - pack. 20 Pcs  **SELF PACK**

Article	Width-thick.	€/Pc
PLSAC 3010AS	30 mm - 10/10	

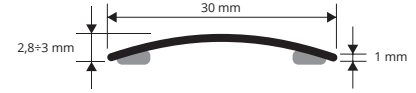
STAINLESS ST. 1.4016 with adhesive thermo packed - bar length 1,66 lm - pack. 20 Pcs  **SELF PACK**

Article	Width-thick.	€/Pc
PLSAC 3016AS	30 mm - 10/10	*
PLSAC 3516AS	35 mm - 10/10	*

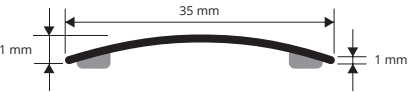
PLSAC 18A/189A
scale 1:1



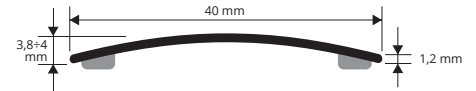
PLSAC 30A/3010AS/309A/309AS/308A/308AS/3016AS
scale 1:1



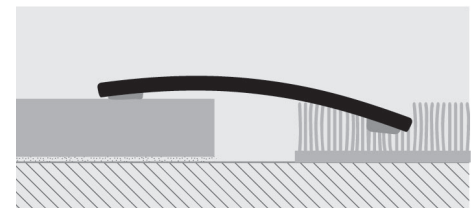
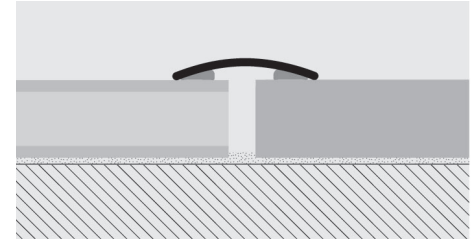
PLSAC 35A/359A/359AS/358A/358AS
scale 1:1



PLSAC 40A/409AS
scale 1:1



EXAMPLES AND INSTRUCTIONS FOR LAYING METHODS

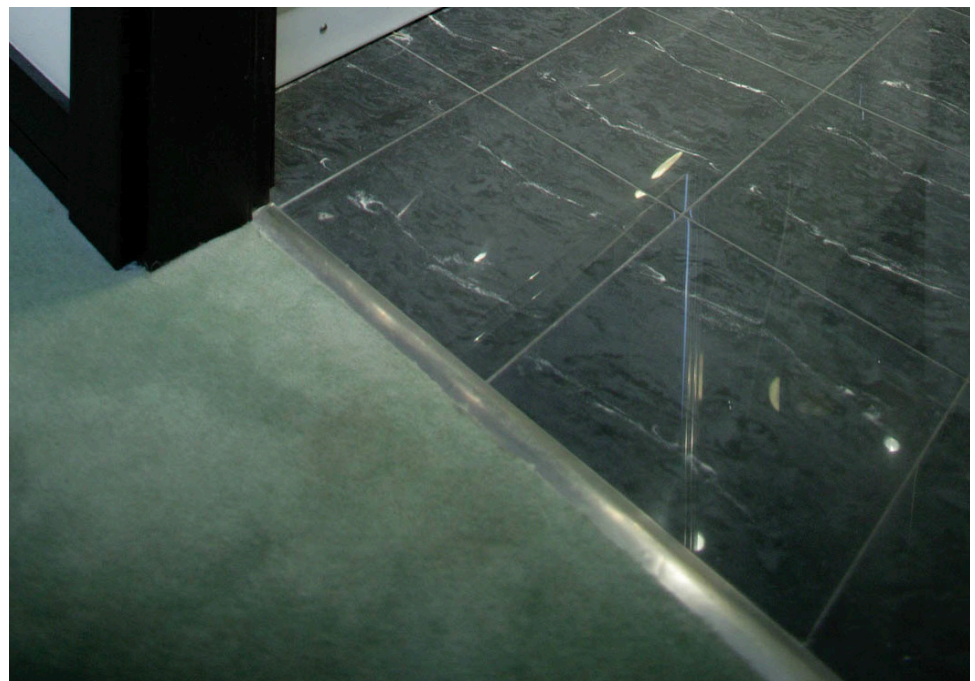


1. Choose the suitable profile and cut it to the necessary length.
2. Degrease, wash and clean the solid surface thoroughly.
3. Remove the protective paper from the adhesive.
4. Lay the profile by applying pressure evenly over the whole surface without using a hammer.

COLOURS



On demand hand-brushed stainless steel
(Prices to be agreed. Production delay 4/5 weeks)



* = Production on demand with minimum quantity of 100 pcs. Production delay 4/5 weeks. Price to be agreed

Prices are referred to whole packs, 10% increase for minimum orders of 10 Pcs, 20% increase for orders of less than 10 Pcs.