

PROJOLLY TRIANGLE

POLISHED, SUPER POLISHED AND SATIN FINISH STAINLESS STEEL AISI 304/1.4301-V2A

PROJOLLY TRIANGLE is a triangle-shaped bead profile polished, super polished and satin finish stainless steel AISI 304/1.4301-V2A that can be applied on external corners of coverings. It can be used to close the perimeter of coverings and like a connection profile between step tread and riser of stairs coated with ceramic or natural stone tiles. Its particular section, the availability in three different finishes and special pieces such as internal and external corners, end caps and joints make **PROJOLLY TRIANGLE** a much sought-after profile that allows a workmanlike application even in environments subject to high mechanical stresses.

PJTRAC... 06
scale 1:1



PJTRAC... 08
scale 1:1



PJTRAC... 10
scale 1:1



PJTRAC... 11
scale 1:1



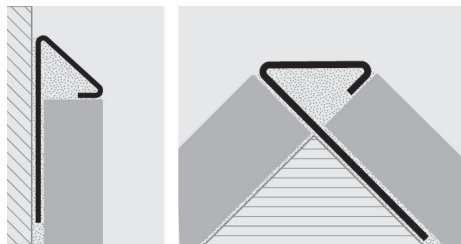
PJTRAC... 125
scale 1:1



PJTRAC... 15
scale 1:1



EXAMPLES AND INSTRUCTIONS FOR LAYING METHODS



POLISHED STAINLESS STEEL AISI 304/1.4301-V2A with protective film
bar length 2,7 lm - pack. 20 Pcs - 54 lm - 8/10 mm

| Article | H mm | €/lm | €/Pc |
|------------|------|------|------|
| PJTRAC 06 | 6 | | |
| PJTRAC 08 | 8 | | |
| PJTRAC 10 | 10 | | |
| PJTRAC 11 | 11 | | |
| PJTRAC 125 | 12,5 | | |
| PJTRAC 15 | 15 | | |

SUPER POLISHED STAINLESS STEEL AISI 304/1.4301-V2A thermo packed

bar length 2,7 lm - pack. 20 Pcs - 54 lm - 8/10 mm

| Article | H mm | €/lm | €/Pc |
|--------------|------|------|------|
| PJTRACML 06 | 6 | | |
| PJTRACML 08 | 8 | | |
| PJTRACML 10 | 10 | | |
| PJTRACML 11 | 11 | | |
| PJTRACML 125 | 12,5 | | |
| PJTRACML 15 | 15 | | |



SATIN FINISH STAINLESS STEEL AISI 304/1.4301-V2A
bar length 2,7 lm - pack. 20 Pcs - 54 lm - 8/10 mm

| Article | H mm | €/lm | €/Pc |
|-------------|------|------|------|
| PJTRACS 06 | 6 | | |
| PJTRACS 08 | 8 | | |
| PJTRACS 10 | 10 | | |
| PJTRACS 11 | 11 | | |
| PJTRACS 125 | 12,5 | | |
| PJTRACS 15 | 15 | | |

COLOURS

| | | |
|--|--|---|
| | | |
| AC - Polished stainless steel AISI 304/1.4301-V2A | ACML - Super polished stainless steel AISI 304/1.4301-V2A | ACS - Satin finish stainless steel AISI 304/1.4301-V2A |

SUITABLE FOR USE IN CONTACT WITH FOODSTUFFS.

1. Choose "PROJOLLY TRIANGLE" according to the tile thickness and desired finish. 2. Cut "PROJOLLY TRIANGLE" to the desired length and apply the adhesive on the support where the profile will be laid. 3. Press the anchoring flange of "PROJOLLY TRIANGLE" into the adhesive. 4. Lay the tiles, aligning them with the profile leaving a 2 mm joint. 5. Fill the joints between the profile and the tiles with grout, in order to avoid water stagnation. Remove immediately all the remains of grout from the surface of the profile.

CAPSULES, END CAPS, THREE-WAYS JOINTS and JOINTS

POLISHED, SUPER POLISHED AND SATIN FINISH STAINLESS STEEL AISI 304/1.4301-V2A / PLASTIC

EXTERNAL / INTERNAL / THREE-WAYS CAPSULES and END CAPS - POLISHED STAINLESS STEEL

| Article | H mm | €/Pack. 10 pcs | €/Pack. 2 pcs |
|------------------|---------------------|-------------------|------------------|
| CPJTRAC .../... | 06-08-10-11-12,5-15 | | |
| IPJTRAC .../... | 06-08-10-11-12,5-15 | | |
| CTPJTRAC .../... | 06-08-10-11-12,5-15 | | |
| TPJTRAC .../... | 06-08-10-11-12,5-15 | | |

Choose the desired packaging: E.g.: CPJTRAC.../10 (Pack. 10 Pcs)
CPJTRAC.../2 (Pack. 2 Pcs)

ARTICLES NOT FOR SALE SINGLY

EXTERNAL / INTERNAL / THREE-WAYS CAPSULES and END CAPS - SUPER POLISHED STAINLESS STEEL

| Article | H mm | €/Pack. 10 pcs | €/Pack. 2 pcs |
|--------------------|---------------------|-------------------|------------------|
| CPJTRACML .../... | 06-08-10-11-12,5-15 | | |
| IPJTRACML .../... | 06-08-10-11-12,5-15 | | |
| CTPJTRACML .../... | 06-08-10-11-12,5-15 | | |
| TPJTRACML .../... | 06-08-10-11-12,5-15 | | |

Choose the desired packaging: E.g.: CPJTRACML.../10 (Pack. 10 Pcs)
CPJTRACML.../2 (Pack. 2 Pcs)

ARTICLES NOT FOR SALE SINGLY

EXTERNAL / INTERNAL / THREE-WAYS CAPSULES AND and CAPS - SATIN FINISH STAINLESS STEEL

| Article | H mm | €/Pack. 10 pcs | €/Pack. 2 pcs |
|-------------------|---------------------|-------------------|------------------|
| CPJTRACS .../... | 06-08-10-11-12,5-15 | | |
| IPJTRACS .../... | 06-08-10-11-12,5-15 | | |
| CTPJTRACS .../... | 06-08-10-11-12,5-15 | | |
| TPJTRACS .../... | 06-08-10-11-12,5-15 | | |

Choose the desired packaging: E.g.: CPJTRACS.../10 (Pack. 10 Pcs)
CPJTRACS.../2 (Pack. 2 Pcs)

ARTICLES NOT FOR SALE SINGLY

JOINTS - PLASTIC

| Article | H mm | €/Pack. 10 pcs | €/Pack. 2 pcs |
|---------|------|-------------------|------------------|
|---------|------|-------------------|------------------|

Choose the desired packaging: E.g.: GIJTRA.../10 (Pack. 10 Pcs)
GIJTRA.../2 (Pack. 2 Pcs)

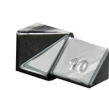
ARTICLES NOT FOR SALE SINGLY

EXTERNAL CAPSULE



CPJTR... .../...

INTERNAL CAPSULE



IPJTR... .../...

THREE-WAYS CAPSULE



CTPJTR... .../...

END CAPS



TPJTR... .../...

JOINTS



GIJTRA .../...