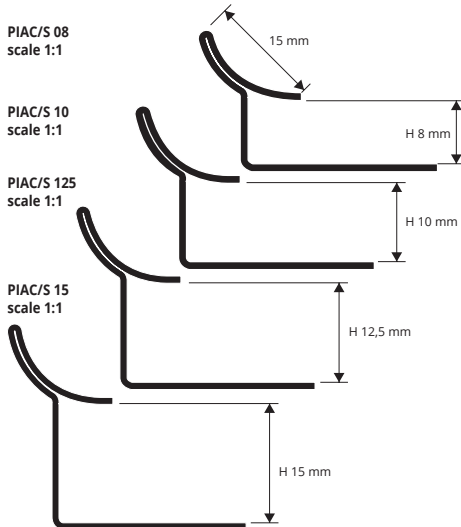


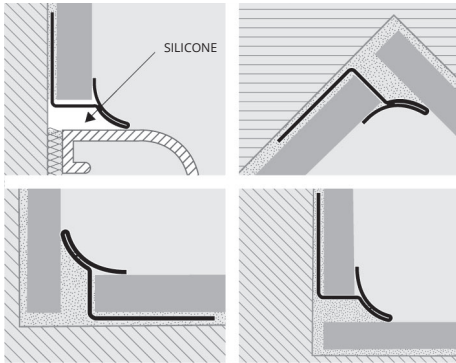
PROINTER AC

POLISHED, SUPER POLISHED AND SATIN FINISH
STAINLESS STEEL AISI 304/1.4301-V2A

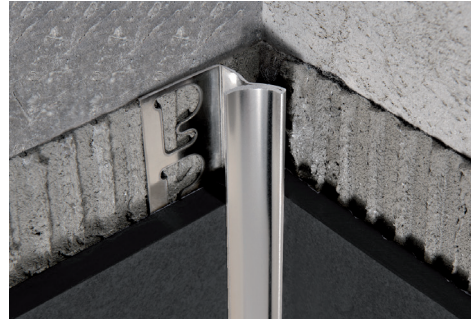
PROINTER AC is a cove-shaped profile in polished, super polished and satin finish stainless steel AISI 304 / 1.4301 - V2A. It is particularly suitable to ensure cleanliness and hygiene in every kind of environment where high resistance to mechanical and chemical stresses are required. Its particular section and the availability in three finishes and special pieces, such as internal and external corners, make **PROINTER AC** a much sought after profile. The profile is easy to match with the wall covering and allows a workmanlike application even in environments subject to high mechanical stresses.



EXAMPLES AND INSTRUCTIONS FOR LAYING METHODS



1. Choose "PROINTER AC" according to the tile thickness and desired finish.
2. Cut "PROINTER AC" to the desired length and apply the adhesive on the support where the profile will be laid.
3. Press the anchoring flange of "PROINTER AC" into the adhesive.
4. Lay the tiles, aligning them with the profile leaving a 2 mm joint. Remove immediately all remains of adhesive from the surface of the profile.
5. Fill the joints between the profile and the tiles with grout, in order to avoid water stagnation. Remove immediately all the remains of grout from the surface of the profile.



POLISHED STAINLESS STEEL AISI 304/1.4301 V2A with protective film
bar length 2,7 lm - pack. 20 Pcs - 54 lm - 10/10 mm

Article	H mm	€/lm	€/Pc
PIAC 08	8		
PIAC 10	10		
PIAC 125	12,5		
PIAC 15	15		

SUPER POLISHED STAINLESS STEEL AISI 304/1.4301-V2A
thermo packed

bar length 2,7 lm - pack. 20 Pcs - 54 lm - 10/10 mm

Article	H mm	€/lm	€/Pc
PIACML 08	8		
PIACML 10	10		
PIACML 125	12,5		
PIACML 15	15		

COLOURS

AC - Polished stainless steel AISI 304/1.4301-V2A	ACML - Super polished stainless steel AISI 304/1.4301-V2A	ACS - Satin finish stainless steel AISI 304/1.4301-V2A

SUITABLE FOR USE IN CONTACT WITH FOODSTUFFS.

Corners of the on demand profiles are also on demand *



SATIN FINISH STAINLESS STEEL AISI 304/1.4301 V2A with protective film
bar length 2,7 lm - pack. 20 Pcs - 54 lm - 10/10 mm

Article	H mm	€/lm	€/Pc
PIACS 08	8		
PIACS 10	10		
PIACS 125	12,5		
PIACS 15	15		

INTERNAL, EXTERNAL, THREE-WAYS PROINTER CORNER JOINTS
POLISHED STAINLESS STEEL AISI 316/1.4404-V4A - pack. 2 Pcs

Article	€/Pack. 2 Pcs
REPIACM/2	
RIPIACM/2	
RITPIACM/2	

INTERNAL, EXTERNAL, THREE-WAYS PROINTER CORNER JOINTS
SATIN FINISH STAINLESS STEEL AISI 316/1.4404-V4A - pack. 2 Pcs

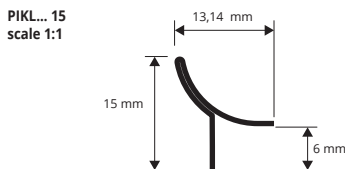
Article	€/Pack. 2 Pcs
REPIACMS/2	
RIPIACMS/2	
RITPIACMS/2	



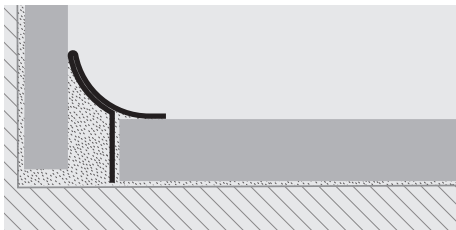
PROINTER KL ACC

STAINLESS STEEL AISI 304/1.4301-V2A

PROINTER KL ACC is a cove-shaped profile in stainless steel AISI 304/1.4301-V2A. The profile allows to connect the floor and wall coverings in ceramic and mosaic also with low thickness. It is particularly suitable to ensure cleanliness and hygiene in every kind of environment where good resistance to mechanical and chemical stresses are required. Its particular section makes **PROSHELL KL ALL** a much sought after profile.



EXAMPLES AND INSTRUCTIONS FOR LAYING METHODS



1. Choose "PROINTER KL ACC" according to the desired finish.
2. Cut "PROINTER KL ACC" to the desired length.
3. Apply the silicone along the floor-wall connection.
4. Press the arrowhead of "PROINTER KL ACC" into the silicone evenly until it is completely adherent to the floor and wall.

SUITABLE FOR USE IN CONTACT WITH FOODSTUFFS



POLISHED STAINLESS ST. AISI 304/1.4301-V2A with protective film
bar length 2,7 lm - pack. 40 Pcs - 108 lm - 10/10mm

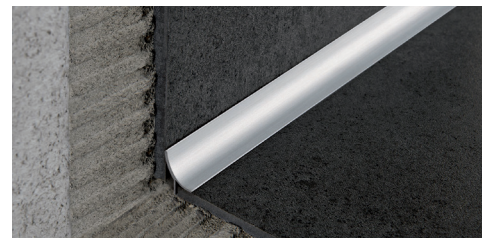
Article	H mm	€/lm	€/Pc
PIKLAC 15	15		

SATIN FINISH STAINLESS ST. AISI 304/1.4301-V2A with protective film
bar length 2,7 lm - pack. 40 Pcs - 108 lm - 10/10mm

Article	H mm	€/lm	€/Pc
PIKLACS 15	15		

COLOURS

AC - Polished stainless steel AISI 304/1.4301-V2A	ACS - Satin finish stainless steel AISI 304/1.4301-V2A



SANDED STAINLESS ST. AISI 304/1.4301-V2A with protective film
bar length 2,7 lm - pack. 40 Pcs - 108 lm - 10/10mm

Article	H mm	€/lm	€/Pc
PIKLACSB 15	15		

SUPER POLISHED ST. AISI 304/1.4301-V2A with protective film
bar length 2,7 lm - pack. 40 Pcs - 108 lm - 10/10mm

Article	H mm	€/lm	€/Pc
PIKLACML 15	15		

AVAILABLE MINIMUM QUANTITY 100 PCS

ACSB - Sanded stainless st. AISI 304/1.4301-V2A	ACML - Super polished stainless steel AISI 304/1.4301-V2A

* = Production on demand with minimum quantity of 100 pcs. Production delay 4/5 weeks. Price to be agreed

Prices are referred to whole packs 10% increase for minimum orders of 10 Pcs 20% increase for orders of less than 10 Pcs.