

PROTERMINAL INT is a profile in anodized and polished aluminium that can be applied on external corners of coverings. It can be used to close the perimeter of coverings and like a connection profile between step tread and riser of stairs coated with ceramic or natural stone tiles. Its particular section and the availability in four different finishes make **PROTERMINAL INT** a much sought-after profile that allows an elegant workmanlike application.

PROTERMINAL INT

ANODIZED AND POLISHED ALUMINIUM



ANODIZED ALUMINIUM (silver - titanium) thermo packed
bar length 2,7 lm - pack. 40 Pcs - 108 lm

Article	H mm	€/lm	€/Pc
PTIAA 08	8		
PTIAT 08	8		
PTIAA 10	10		
PTIAT 10	10		
PTIAA 125	12,5		
PTIAT 125	12,5		

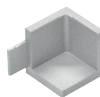
POLISHED ALUMINIUM (chrome - titanium) thermo packed
bar length 2,7 lm - pack. 40 Pcs - 108 lm

Article	H mm	€/lm	€/Pc
PTIBC 08	8		
PTIBT 08	8		
PTIBC 10	10		
PTIBT 10	10		
PTIBC 125	12,5		
PTIBT 125	12,5		

INTERNAL, EXTERNAL, THREE-WAYS JOINTS
ANODIZED POLISHED ALUMINIUM - pack. 3 Pcs

Article	€/Pack.
RIPTI ... 08 - 10 - 125/3	
REPTI ... 08 - 10 - 125/3	
RTPIT ... 08 - 10 - 125/3	

INTERNAL CORNER
RIPTI ... 08 - 10 - 125



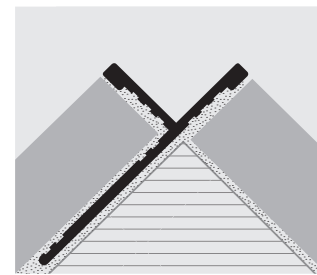
EXTERNAL CORNER
REPTI ... 08 - 10 - 125



3 WAYS JOINT
RTPIT ... 08 - 10 - 125



EXAMPLES AND INSTRUCTIONS FOR LAYING METHODS



1. Choose "PROTERMINAL INT" according to the tile thickness and desired finish.
2. Cut "PROTERMINAL INT" to the desired length and apply the adhesive on the support where the profile will be laid.
3. Press the anchoring flange of "PROTERMINAL INT" into the adhesive.
4. Lay the tiles, aligning them with the profile leaving a 2 mm joint.
5. Fill the joints between the profile and the tiles with grout, in order to avoid water stagnation. Remove immediately all the remains of grout from the surface of the profile.

COLOURS

ANODIZED		POLISHED	
AA - Anodized silver alum.	AT - Anodized titanium alum.	BC - Polished chrome alum.	BT - Polished titanium alum.

On demand may be realised in other finishes of the colour chart. Contact our customer service for minimal quantity, timing and price.

