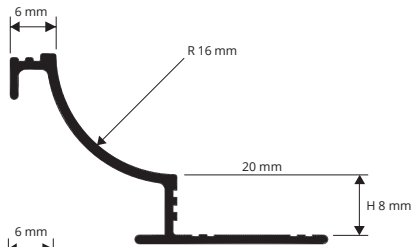


# PROSHELL ALL

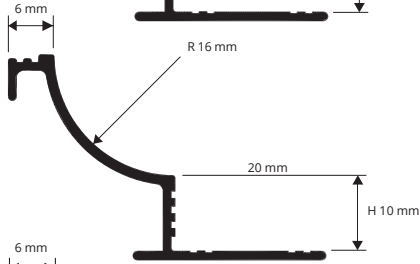
ANODIZED, POLISHED AND  
VARNISHED ALUMINIUM

**PROSHELL ALL** is a cove-shaped profile in anodized, polished and varnished aluminium particularly suitable to ensure cleanliness and hygiene in indoors environment where good resistance to mechanical and chemical stresses are required. Its particular section and the availability in three finishes, three heights and special pieces, such as internal and external corners, end caps and junctions, make **PROSHELL ALL** a much sought-after profile that allows a workmanlike application.

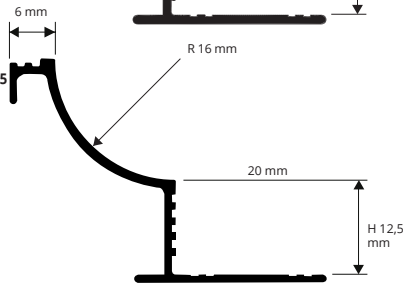
PSH... 8  
scale 1:1



PSH... 10  
scale 1:1



PSH... 125  
scale 1:1



BUY PROTERMINAL PVC OR ALUMINIUM  
TO CREATE THE DUAL HEIGHT (SEE NEXT PIC):  
Use proterminal PT 08 to reach H 10 mm  
Use proterminal PT 10 to reach H 12,5 mm  
Use proterminal PT 12,5 to reach H 15 mm



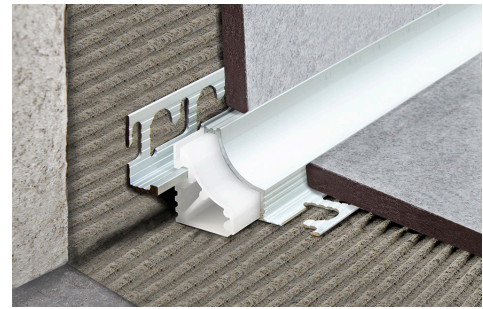
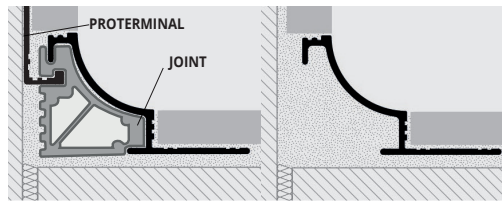
**ANODIZED SILVER ALUMINIUM thermo packed**  
bar length 2,7 lm - pack. 20 Pcs - 54 lm

Article	H mm	€/lm	€/Pc
PSHAA 08	8		
PSHAA 10	10		
PSHAA 125	12,5		

**VARNISHED WHITE ALUMINIUM thermo packed**  
bar length 2,7 lm - pack. 20 Pcs - 54 lm

Article	H mm	€/lm	€/Pc
PSHA 08-01	8		
PSHA 10-01	10		
PSHA 125-01	12,5		

## EXAMPLES AND INSTRUCTIONS FOR LAYING METHODS



**POLISHED CHROME ALUMINIUM thermo packed**  
bar length 2,7 lm - pack. 20 Pcs - 54 lm

Article	H mm	€/lm	€/Pc
PSHBC 08	8		
PSHBC 10	10		
PSHBC 125	12,5		

## COLOURS

Article	Color
AA - Anod. Silver alum.	
BC - Polished chrome alum.	
01 - White varnished alum.	

1. Choose "PROSHELL ALL" according to the tile thickness and desired finish. 2. Cut "PROSHELL ALL" to the desired length and apply the adhesive on the support where the profile will be laid. 3. Press the anchoring flange of "PROSHELL ALL" into the adhesive. 4. Lay the tiles on floor and wall aligning them with the profile leaving a 2 mm joint. Remove immediately all remains of adhesive from the surface of the profile. 5. Fill the joints between the profile and the tiles with grout, in order to avoid water stagnation. Remove immediately all the remains of grout from the surface of the profile. (\*) to obtain double height, use the joint of the same size as the selected profile and choose the PROTERMINAL PVC or ALUMINIUM according to the required thickness, see INSTRUCTIONS FOR LAYING.

## CORNERS, END CAPS and JOINTS

SILVER ANODIZED, POLISHED CHROME AND VARNISHED WHITE ALUMINIUM / PLASTIC

\* accessories of the on demand profiles are also on demand



### EXTERNAL/INTERNAL CORNER - ANODIZED SILVER ALUMINIUM

Article	H mm	€/Pack 10 Pcs	€/Pack 2 Pcs
RPSHIAA .../...	08/10/125		
RPSHEAA .../...	08/10/125		

### EXTERNAL/INTERNAL CORNER VARNISHED WHITE ALUMINIUM

Article	H mm	€/Pack 10 Pcs	€/Pack 2 Pcs
RPSHIA ...-01/...	08/10/125		
RPSHEA ...-01/...	08/10/125		

### JOINTS IN RIGID GREY PLASTIC - pack. 10 Pcs

Article	H mm	€/Pack
GISHN 08/...	8	
GISHN 10/...	10	
GISHN 125/...	12,5	

### EXTERNAL/INTERNAL CORNER POLISHED CHROME ALUMINIUM

Article	H mm	€/Pack 10 Pcs	€/Pack 2 Pcs
RPSHIBC .../...	08/10/125		
RPSHEBC .../...	08/10/125		

### CAPS - ANODIZED SILVER ALUMINIUM/POLISHED CHROME/VARNISHED WHITE ALUM.

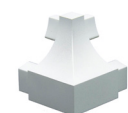
Article	H mm	€/Pack 10 Pcs	€/Pack 2 Pcs
TPSHAA 08/...	8		
TPSHBC 08/...	8		
TPSHA 08/...	8		
TPSHAA 10/...	10		
TPSHBC 10/...	10		
TPSHA 10/...	10		
TPSHAA 125/...	12,5		
TPSHBC 125/...	12,5		
TPSHA 125/...	12,5		

Choose the desired packaging. E.g.: TPSH... ...-01/5 (Pack 10 Pcs)  
TPSH... ...-01/1 (Pack 2 Pcs)

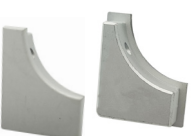
INTERNAL CORNER  
RPSHI.../...



EXTERNAL CORNER  
RPSHE.../...



END CAP  
TPSH.../...



JOINT  
GISHN.../...

