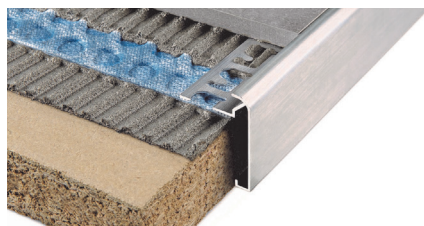
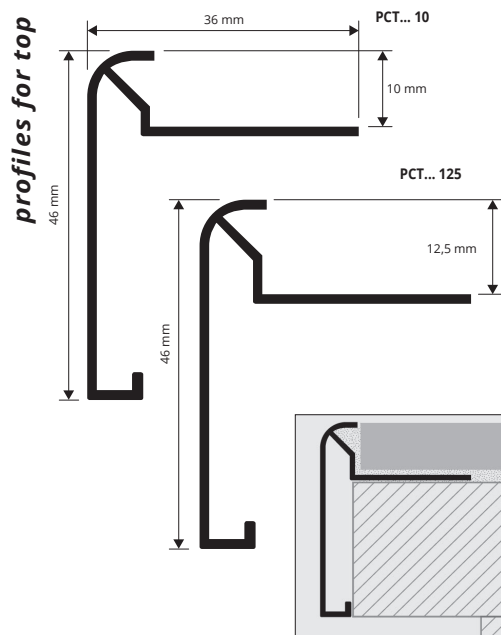


# PROTOP

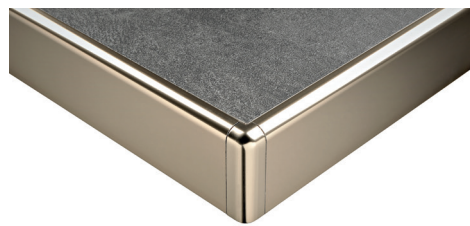
ANODIZED AND POLISHED ALUMINIUM

**PROTOP** is a rounded profile in anodized and polished aluminium. The profile protects the tile edges and decorates the countertops of kitchens realized with ceramic. Its particular section and elegance, the availability of three different finishes and special pieces such as internal and external corner at 90° and 135°, make **PROTOP** a much sought-after profile that allows an elegant workmanlike application.



**ANODIZED SILVER ALUMINIUM**  
bar length 2,7 lm - pack. 10 Pcs - 27 lm

Article	H mm	€/lm	€/Pc
PCTAA 10	10		
PCTAA 125	12,5		



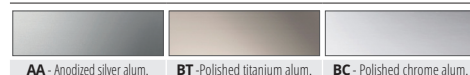
**POLISHED TITANIUM ALUMINIUM**  
bar length 2,7 lm - pack. 10 Pcs - 27 lm

Article	H mm	€/lm	€/Pc
PCTBT 10	10		
PCTBT 125	12,5		

**POLISHED CHROME ALUMINIUM**  
bar length 2,7 lm - pack. 10 Pcs - 27 lm

Article	H mm	€/lm	€/Pc
PCTBC 10	10		
PCTBC 125	12,5		

## COLOURS



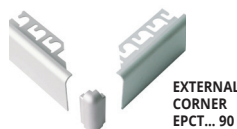
## EXAMPLES AND INSTRUCTIONS FOR LAYING METHODS

1. Choose "PROTOP" according to the tile thickness and desired finish. 2. Cut "PROTOP" to the desired length and apply the adhesive on the support where the profile will be laid. 3. Press the anchoring flange of "PROTOP" into the adhesive. 4. Lay the tiles, aligning them with the profile leaving a 2 mm joint. Remove immediately all remains of adhesive from the surface of the profile. 5. Fill the joints between the profile and the tiles with grout, in order to avoid water stagnation. Remove immediately all the remains of grout from the surface of the profile.

# CORNERS

**INTERNAL / EXTERNAL CORNERS ANODIZED SILVER ALUMINIUM**  
pack. 10 Pcs

Article	€/pack
EPCTAA 90/10 (90°)	
IPCTAA 90/10 (90°)	
EPCTAA 135/10 (135°)	
IPCTAA 135/10 (135°)	



EXTERNAL CORNER  
EPCT... 90

**INTERNAL / EXTERNAL CORNERS POLISHED TITANIUM ALUMINIUM**  
pack. 10 Pcs

Article	€/pack
EPCTBT 90/10 (90°)	
IPCTBT 90/10 (90°)	
EPCTBT 135/10 (135°)	
IPCTBT 135/10 (135°)	



EXTERNAL CORNER  
EPCT...135



INTERNAL CORNER  
IPCT... 90

**INTERNAL / EXTERNAL CORNERS POLISHED CHROME ALUMINIUM**  
pack. 10 Pcs

Article	€/pack
EPCTBC 90/10 (90°)	
IPCTBC 90/10 (90°)	
EPCTBC 135/10 (135°)	
IPCTBC 135/10 (135°)	

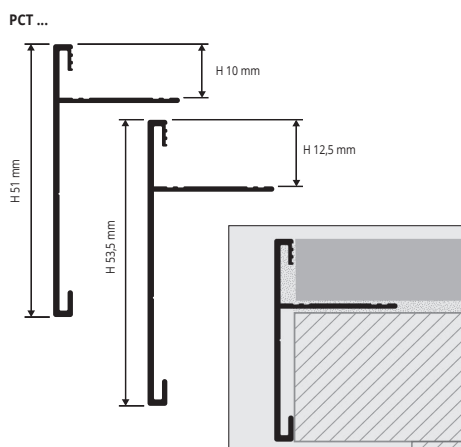


INTERNAL CORNER  
IPCT...135

# PROTOP T

ANODIZED AND POLISHED ALUMINIUM

**PROTOP T** is a square profile in anodized and polished aluminium. The profile protects the tile edges and decorates the countertops of kitchens realized with ceramic. Its particular section and elegance, the availability of two different finishes and special pieces such as internal and external corner at 90° and 135°, make **PROTOP T** a much sought-after profile that allows an elegant workmanlike application.



**ANODIZED SILVER ALUMINIUM**  
bar length 2,7 lm - pack. 10 Pcs - 27 lm

Article	H mm	€/lm	€/Pc
PCTAA 10T	10		
PCTAA 125T	12,5		



**POLISHED CHROME ALUMINIUM**  
bar length 2,7 lm - pack. 10 Pcs - 27 lm

Article	H mm	€/lm	€/Pc
PCTBC 10T	10		
PCTBC 125T	12,5		

**INTERNAL / EXTERNAL CORNER ANODIZED SILVER ALUMINIUM**  
pack. 10 Pcs

Article	€/pack
IEPCTAA 12590T/10 (90°)	
IEPCTAA 1090T/10 (90°)	
IEPCTAA 10135T/10 (135°)	
IEPCTAA 125135T/10 (135°)	

**INTERNAL / EXTERNAL CORNER ANODIZED CHROME ALUMINIUM**  
pack. 10 Pcs

Article	€/pack
IEPCTBC 12590T/10 (90°)	
IEPCTBC 1090T/10 (90°)	
IEPCTBC 10135T/10 (135°)	
IEPCTBC 125135T/10 (135°)	

**EXAMPLES AND INSTRUCTIONS FOR LAYING METHODS**  
1. Choose "PROTOP T" according to the tile thickness and desired finish. 2. Cut "PROTOP T" to the desired length and apply the adhesive on the support where the profile will be laid. 3. Press the anchoring flange of "PROTOP T" into the adhesive. 4. Lay the tiles, aligning them with the profile leaving a 2 mm joint. Remove immediately all remains of adhesive from the surface of the profile. 5. Fill the joints between the profile and the tiles with grout, in order to avoid water stagnation. Remove immediately all the remains of grout from the surface of the profile.



IEPCT... 90T



IEPCT... 135T

## COLOURS

