

The **CIRCULAR SPACER** is for horizontal use with two removable circles for lightweight mesh.
The circular spacer has been made with two large circles to occupy more space.

GREY HD POLYETHYLENE - with 2 circles
pack. 250 Pcs

Article	Formwork spacer mm		
PAD 15	15		
PAD 20	20		

GREY HD POLYETHYLENE - with 2 circles
pack. 200 Pcs

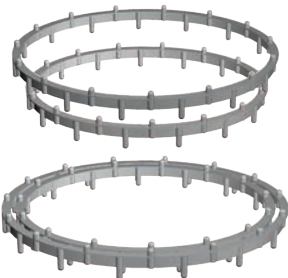
Article	Formwork spacer mm		
PAD 25	25		
PAD 30	30		

COLOURS



G - Grey standard

(for a precise assessment of colours and finishes, see the relative enclosed sheet)



spacers

SPACER FOR VERTICAL/HORIZONTAL MESH

GRAY HD POLYETHYLENE

SPACER for **VERTICAL AND HORIZONTAL MESHES**. Complete with hooks fixing to mesh.
Dimensions 210 x 95 mm.

GREY HD POLYETHYLENE
length 210 mm - width 95 mm

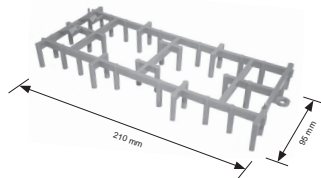
Article	H mm		
DVO 10 (pack. 400 Pcs)	10		
DVO 15 (pack. 400 Pcs)	15		
DVO 20 (pack. 300 Pcs)	20		
DVO 25 (pack. 250 Pcs)	25		
DVO 30 (pack. 250 Pcs)	30		
DVO 35 (pack. 200 Pcs)	35		

COLOURS



G - Grey standard

(for a precise assessment of colours and finishes, see the relative enclosed sheet)



spacers

SPACER FOR GLASS BRICK

WHITE HD POLYETHYLENE

WHITE HD POLYETHYLENE
pack. 600 Pcs

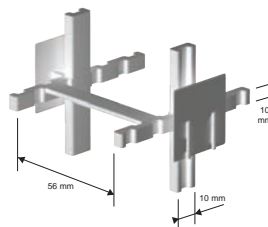
Article	Thick mm		
DSVT	10		

COLOURS



White

(for a precise assessment of colours and finishes, see the relative enclosed sheet)

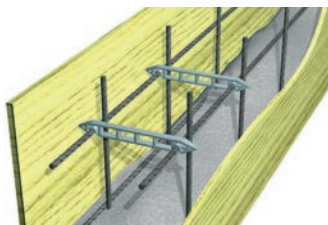


spacers

TYPE "DOPPY" WITH DOUBLE SLOT

GRAY HD POLYETHYLENE

With the **DOPPY** type **SPACER WITH DOUBLE SLOT**, two \varnothing 4 to 8 mm mesh reinforcements may be kept simultaneously at the same distance from the formwork.

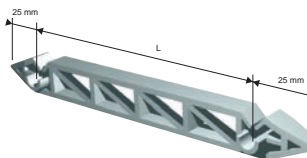


GREY HD POLYETHYLENE - for mesh up to \varnothing 8 mm
pack. 500 Pcs

Article	mesh dist. L mm		
PPY 15	100		

GREY HD POLYETHYLENE - for mesh up to \varnothing 8 mm
pack. 250 Pcs

Article	mesh dist. L mm		
PPY 20	150		
PPY 25	200		
PPY 30	250		



spacers